

CERTIFICATE OF ANALYSIS

ISO/IEC 17025:2017 ACCREDITATION #103104



Order #: 48447
 Order Name:
 01212020FLWRCBG
 Batch#: 01212020FLWRCBG
 Received: 03/10/2020
 Completed: 03/13/2020

SunFlora Inc.

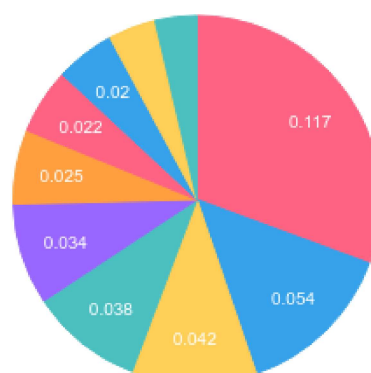
TERPENES: TOTAL (0.399%)

Headspace GCMS - Shimadzu GCMS QP2020 with HS20

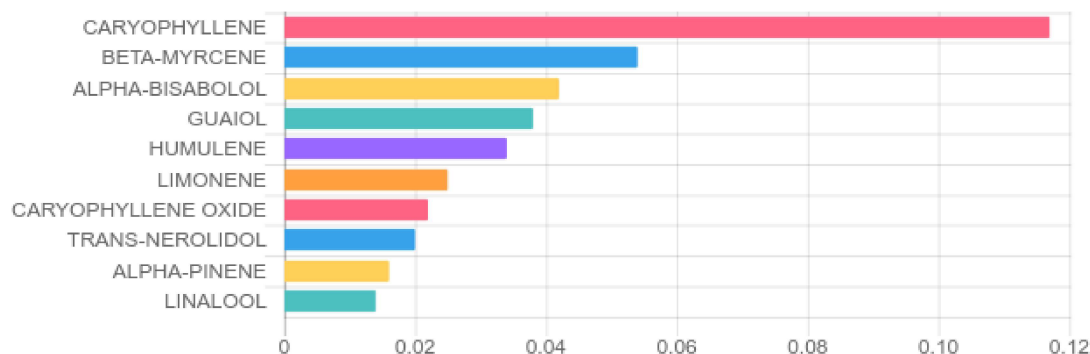
GSL SOP 404
 Prepared: 03/10/2020 16:49:54

Terpene	Results (%)	LOQ (%)	LOD (%)
ALPHA-BISABOLOL	0.042%	0.0067%	0.0063%
ALPHA-PINENE	0.016%	0.0067%	0.0063%
BETA-MYRCENE	0.054%	0.0067%	0.0063%
CAMPHENE	B/LOQ	0.0067%	0.0063%
CARYOPHYLLENE	0.117%	0.0067%	0.0063%
CARYOPHYLLENE OXIDE	0.022%	0.0067%	0.0063%
CIS-BETA-OCIMENE	B/LOQ	0.0067%	0.0031%
GAMMA-TERPINENE	B/LOQ	0.0067%	0.0016%
GUAIOL	0.038%	0.0067%	0.0063%
HUMULENE	0.034%	0.0067%	0.0063%
LIMONENE	0.025%	0.0067%	0.0063%
LINALOOL	0.014%	0.0067%	0.0063%
TERPINOLENE	B/LOQ	0.0067%	0.0063%
TRANS-NEROLIDOL	0.020%	0.0067%	0.0063%

Terpenes Breakdown



Top Terpenes Results:



Tested for but not present:

BETA-PINENE, 3-CARENE, ALPHA-TERPINENE, TRANS-BETA-OCIMENE, P-CYMENE, EUCALYPTOL, ISOPULEGOL, GERANIOL, CIS-NEROLIDOL

Dr. Andrew Hall, Ph.D., Chief Scientific Officer

Ben Witten, MS, MT., Lab Director

Green Scientific Labs
 info@greenscientificlabs.com
 1-833 TEST CBD



Green Scientific Labs uses its best efforts to deliver high quality results and to verify that the data contained therein are based on sound scientific judgment and levels listed are guidelines only and all data was reported based on standard laboratory procedures and deviations. However Green Scientific Labs makes no warranties or claims to that effect and further shall not be liable for any damage or misrepresentation that may result from the use or misuse of the data contained herein in any way. Further, Green Scientific Labs makes no claims regarding representations of the analyzed sample to the larger batch from which it was taken. Data and information in this report are intended solely for the individual(s) for whom samples were submitted and as part of our strict confidentiality policy, Green Scientific Labs can only discuss results with the original client of record.