

Banana Runtz D8 Vape

Sample ID: SA-06172021-2315
 Batch: 0621D8VP
 Type: Finished Materials
 Matrix: Concentrate - Vape

Received: 06/21/2021
 Completed: 06/25/2021

Client
 SunFlora Inc.
 600 8th Ave W, STE 400
 Palmetto, FL 34221
 USA



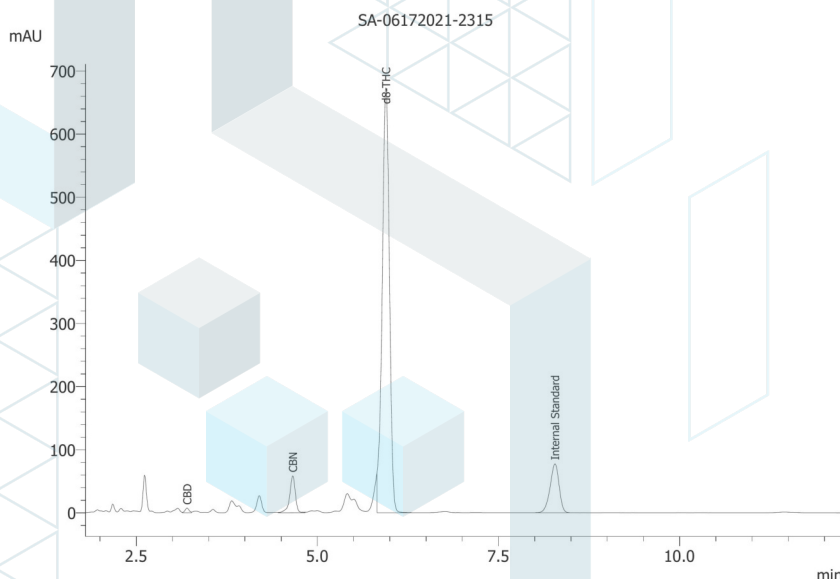
Summary

Test	Date Tested	Status
Cannabinoids	06/23/2021	Tested
Foreign Matter	06/23/2021	Not Detected
Heavy Metals	06/22/2021	Tested
Microbials	06/25/2021	Tested
Mycotoxins	06/25/2021	Tested
Pesticides	06/25/2021	Tested
Residual Solvents	06/22/2021	Tested
Terpenes	06/23/2021	Tested

Cannabinoids by HPLC-PDA

ND	70.2 %	72.7 %	Not Tested	Not Detected	Yes
Total Δ9-THC	Δ8-THC	Total Cannabinoids	Moisture Content	Foreign Matter	Internal Marker Recovered

Analyte	LOD (%)	LOQ (%)	Result (%)	Result (mg/g)
CBC	0.0095	0.0284	ND	ND
CBCA	0.0181	0.0543	ND	ND
CBCV	0.006	0.018	ND	ND
CBD	0.0081	0.0242	0.2581	2.5805
CBDA	0.0043	0.013	ND	ND
CBDV	0.0061	0.0182	0.4223	4.2234
CBDVA	0.0021	0.0063	ND	ND
CBG	0.0057	0.0172	ND	ND
CBGA	0.0049	0.0147	ND	ND
CBL	0.0112	0.0335	ND	ND
CBLA	0.0124	0.0371	ND	ND
CBN	0.0056	0.0169	1.8552	18.5523
CBNA	0.006	0.0181	ND	ND
Δ8-THC	0.0104	0.0312	70.1839	701.839
Δ9-THC	0.0076	0.0227	ND	ND
Δ9-THCA	0.0084	0.0251	ND	ND
Δ9-THCV	0.0069	0.0206	ND	ND
Δ9-THCVA	0.0062	0.0186	ND	ND
Total Δ9-THC			ND	ND
Total CBD			0.2581	2.5805
Total			72.7195	727.195



ND = Not Detected; NT = Not Tested; LOD = Limit of Detection; LOQ = Limit of Quantitation; RL = Reporting Limit; Δ = Delta; Total Δ9-THC = Δ9-THCA * 0.877 + Δ9-THC; Total CBD = CBDA * 0.877 + CBD



06/25/2021

This product or substance has been tested by KCA Laboratories using validated testing methodologies and an ISO/IEC 17025:2017 accredited quality system. Values reported relate only to the product or substance tested. The reported result is based on a sample weight. Unless otherwise stated, results of tests performed on all quality control samples met criteria for acceptance established by KCA Laboratories. KCA Laboratories makes no claims as to the efficacy, safety or other risks associated with any detected or non-detected amounts of any substances reported herein. This Certificate of Analysis shall not be reproduced except in full, without the written approval of KCA Laboratories. KCA Laboratories can provide measurement uncertainty upon request.



ISO/IEC 17025:2017 Accredited
 Accreditation #108651



**KCA Laboratories**232 North Plaza Drive
Nicholasville, KY 40356+1-833-KCA-LABS
<https://kcalabs.com>
KDA Lic.# P_0058**Certificate of Analysis**

2 of 8

Banana Runtz D8 VapeSample ID: SA-06172021-2315
Batch: 0621D8VP
Type: Finished Materials
Matrix: Concentrate - VapeReceived: 06/21/2021
Completed: 06/25/2021**Client**SunFlora Inc.
600 8th Ave W, STE 400
Palmetto, FL 34221
USA**Heavy Metals by ICP-MS**

Analyte	LOD (ppb)	LOQ (ppb)	Result (ppb)
Arsenic	2	20	ND
Cadmium	1	20	ND
Lead	2	20	ND
Mercury	12	50	ND

ND = Not Detected; NT = Not Tested; LOD = Limit of Detection; LOQ = Limit of Quantitation; P = Pass; F = Fail; RL = Reporting Limit

06/25/2021

This product or substance has been tested by KCA Laboratories using validated testing methodologies and an ISO/IEC 17025:2017 accredited quality system. Values reported relate only to the product or substance tested. The reported result is based on a sample weight. Unless otherwise stated, results of tests performed on all quality control samples met criteria for acceptance established by KCA Laboratories. KCA Laboratories makes no claims as to the efficacy, safety or other risks associated with any detected or non-detected amounts of any substances reported herein. This Certificate of Analysis shall not be reproduced except in full, without the written approval of KCA Laboratories. KCA Laboratories can provide measurement uncertainty upon request.



Banana Runtz D8 Vape

Sample ID: SA-06172021-2315
 Batch: 0621D8VP
 Type: Finished Materials
 Matrix: Concentrate - Vape

Received: 06/21/2021
 Completed: 06/25/2021

Client
 SunFlora Inc.
 600 8th Ave W, STE 400
 Palmetto, FL 34221
 USA

Pesticides by LC-MS/MS and GC-MS/MS

Analyte	LOD (ppb)	LOQ (ppb)	Result (ppb)	Analyte	LOD (ppb)	LOQ (ppb)	Result (ppb)
Abamectin	1	5	ND	Imazalil	1	5	ND
Acephate	1	5	ND	Imidacloprid	1	5	ND
Acetamiprid	1	5	ND	Kresoxim methyl	1	5	ND
Aldicarb	1	5	ND	Malathion	1	5	ND
Azoxystrobin	1	5	ND	Metalaxyl	1	5	ND
Bifenazate	1	5	ND	Methiocarb	1	5	ND
Boscalid	1	5	ND	Methomyl	1	5	ND
Carbaryl	1	5	ND	Mevinphos	1	5	ND
Carbofuran	1	5	ND	Myclobutanil	1	5	ND
Chloranthraniliprole	1	5	ND	Naled	1	5	ND
Clofentezine	1	5	ND	Oxamyl	1	5	ND
Daminozide	1	5	ND	Paclobutrazol	1	5	ND
Diazinon	1	5	ND	Permethrin	1	5	ND
Dichlorvos	1	5	ND	Phosmet	1	5	ND
Dimethoate	1	5	ND	Piperonyl Butoxide	1	5	ND
Dimethomorph	1	5	ND	Propiconazole	1	5	ND
Ethoprophos	1	5	ND	Propoxur	1	5	ND
Etofenprox	1	5	ND	Pyridaben	1	5	ND
Fenhexamid	1	5	ND	Spinetoram	1	5	ND
Fenoxycarb	1	5	ND	Spinosad	1	5	ND
Fenpyroximate	1	5	ND	Spiromesifen	1	5	ND
Fipronil	1	5	ND	Spirotetramat	1	5	ND
Flonicamid	1	5	ND	Spiroxamine	1	5	ND
Fludioxonil	1	5	ND	Tebuconazole	1	5	ND
				Thiacloprid	1	5	ND
				Thiamethoxam	1	5	ND
				Trifloxystrobin	1	5	ND

ND = Not Detected; NT = Not Tested; LOD = Limit of Detection; LOQ = Limit of Quantitation; P = Pass; F = Fail; RL = Reporting Limit



06/25/2021

This product or substance has been tested by KCA Laboratories using validated testing methodologies and an ISO/IEC 17025:2017 accredited quality system. Values reported relate only to the product or substance tested. The reported result is based on a sample weight. Unless otherwise stated, results of tests performed on all quality control samples met criteria for acceptance established by KCA Laboratories. KCA Laboratories makes no claims as to the efficacy, safety or other risks associated with any detected or non-detected amounts of any substances reported herein. This Certificate of Analysis shall not be reproduced except in full, without the written approval of KCA Laboratories. KCA Laboratories can provide measurement uncertainty upon request.





KCA Laboratories
232 North Plaza Drive
Nicholasville, KY 40356

+1-833-KCA-LABS
<https://kcalabs.com>
KDA Lic.# P_0058

Certificate of Analysis

4 of 8

Banana Runtz D8 Vape

Sample ID: SA-06172021-2315
Batch: 0621D8VP
Type: Finished Materials
Matrix: Concentrate - Vape

Received: 06/21/2021
Completed: 06/25/2021

Client
SunFlora Inc.
600 8th Ave W, STE 400
Palmetto, FL 34221
USA

Microbials by qPCR and/or Plating

Analyte	LOD	Result (CFU/g)
Aerobic Bacteria	100	ND
E.coli/Coliforms	100	ND
Salmonella	100	ND
Total Enterobacteriaceae	100	ND

ND = Not Detected; NT = Not Tested; LOD = Limit of Detection; LOQ = Limit of Quantitation; CFU = Colony Forming Units; P = Pass; F = Fail; RL = Reporting Limit

06/25/2021

This product or substance has been tested by KCA Laboratories using validated testing methodologies and an ISO/IEC 17025:2017 accredited quality system. Values reported relate only to the product or substance tested. The reported result is based on a sample weight. Unless otherwise stated, results of tests performed on all quality control samples met criteria for acceptance established by KCA Laboratories. KCA Laboratories makes no claims as to the efficacy, safety or other risks associated with any detected or non-detected amounts of any substances reported herein. This Certificate of Analysis shall not be reproduced except in full, without the written approval of KCA Laboratories. KCA Laboratories can provide measurement uncertainty upon request.





KCA Laboratories
232 North Plaza Drive
Nicholasville, KY 40356

+1-833-KCA-LABS
<https://kcalabs.com>
KDA Lic.# P_0058

Certificate of Analysis

5 of 8

Banana Runtz D8 Vape

Sample ID: SA-06172021-2315
Batch: 0621D8VP
Type: Finished Materials
Matrix: Concentrate - Vape

Received: 06/21/2021
Completed: 06/25/2021

Client
SunFlora Inc.
600 8th Ave W, STE 400
Palmetto, FL 34221
USA

Mycotoxins by LC-MS/MS

Analyte	LOD (ppb)	LOQ (ppb)	Result (ppb)
B1	1	5	ND
B2	1	5	ND
G1	1	5	ND
G2	1	5	ND
Ochratoxin A	1	5	ND

ND = Not Detected; NT = Not Tested; LOD = Limit of Detection; LOQ = Limit of Quantitation; P = Pass; F = Fail; RL = Reporting Limit

06/25/2021

This product or substance has been tested by KCA Laboratories using validated testing methodologies and an ISO/IEC 17025:2017 accredited quality system. Values reported relate only to the product or substance tested. The reported result is based on a sample weight. Unless otherwise stated, results of tests performed on all quality control samples met criteria for acceptance established by KCA Laboratories. KCA Laboratories makes no claims as to the efficacy, safety or other risks associated with any detected or non-detected amounts of any substances reported herein. This Certificate of Analysis shall not be reproduced except in full, without the written approval of KCA Laboratories. KCA Laboratories can provide measurement uncertainty upon request.



Banana Runtz D8 Vape

Sample ID: SA-06172021-2315
 Batch: 0621D8VP
 Type: Finished Materials
 Matrix: Concentrate - Vape

Received: 06/21/2021
 Completed: 06/25/2021

Client
 SunFlora Inc.
 600 8th Ave W, STE 400
 Palmetto, FL 34221
 USA

Residual Solvents by HS-GC-MS/MS

Analyte	LOD (ppm)	LOQ (ppm)	Result (ppm)	Analyte	LOD (ppm)	LOQ (ppm)	Result (ppm)
Acetone	0.5	1	3.13	Ethylene Oxide	0.5	1	ND
Acetonitrile	0.5	1	ND	Heptane	0.5	1	ND
Benzene	0.5	1	ND	n-Hexane	0.5	1	ND
Butane	0.5	1	ND	Isobutane	0.5	1	ND
1-Butanol	0.5	1	ND	Isopropyl Acetate	0.5	1	ND
2-Butanol	0.5	1	ND	Isopropyl Alcohol	0.5	1	4.54
2-Butanone	0.5	1	ND	Isopropylbenzene	0.5	1	ND
Chloroform	0.5	1	ND	Methanol	0.5	1	3.42
Cyclohexane	0.5	1	ND	2-Methylbutane	0.5	1	ND
1,2-Dichloroethane	0.5	1	ND	Methylene Chloride	0.5	1	ND
1,2-Dimethoxyethane	0.5	1	ND	2-Methylpentane	0.5	1	ND
Dimethyl Sulfoxide	0.5	1	ND	3-Methylpentane	0.5	1	ND
N,N-Dimethylacetamide	0.5	1	ND	n-Pentane	0.5	1	ND
2,2-Dimethylbutane	0.5	1	ND	1-Pentanol	0.5	1	ND
N,N-Dimethylformamide	0.5	1	ND	n-Propane	0.5	1	ND
2,2-Dimethylpropane	0.5	1	ND	1-Propanol	0.5	1	ND
1,4-Dioxane	0.5	1	ND	Pyridine	0.5	1	ND
Ethanol	0.5	1	ND	Tetrahydrofuran	0.5	1	ND
2-Ethoxyethanol	0.5	1	ND	Toluene	0.5	1	ND
Ethyl Acetate	0.5	1	ND	Trichloroethylene	0.5	1	ND
Ethyl Ether	0.5	1	ND	Tetramethylene Sulfone	0.5	1	ND
Ethylbenzene	0.5	1	ND	Xylenes (o-, m-, and p-)	0.5	1	ND
Ethylene Glycol	0.5	1	ND				

ND = Not Detected; NT = Not Tested; LOD = Limit of Detection; LOQ = Limit of Quantitation; P = Pass; F = Fail; RL = Reporting Limit



06/25/2021

This product or substance has been tested by KCA Laboratories using validated testing methodologies and an ISO/IEC 17025:2017 accredited quality system. Values reported relate only to the product or substance tested. The reported result is based on a sample weight. Unless otherwise stated, results of tests performed on all quality control samples met criteria for acceptance established by KCA Laboratories. KCA Laboratories makes no claims as to the efficacy, safety or other risks associated with any detected or non-detected amounts of any substances reported herein. This Certificate of Analysis shall not be reproduced except in full, without the written approval of KCA Laboratories. KCA Laboratories can provide measurement uncertainty upon request.



Banana Runtz D8 Vape

Sample ID: SA-06172021-2315
 Batch: 0621D8VP
 Type: Finished Materials
 Matrix: Concentrate - Vape

Received: 06/21/2021
 Completed: 06/25/2021

Client
 SunFlora Inc.
 600 8th Ave W, STE 400
 Palmetto, FL 34221
 USA

Terpenes by HS-GC-MS/MS

Analyte	LOD (%)	LOQ (%)	Result (%)	Analyte	LOD (%)	LOQ (%)	Result (%)
α -Bisabolol	0.00001	0.00005	ND	Limonene	0.00001	0.00005	19.5
(+)-Borneol	0.00001	0.00005	ND	Linalool	0.00001	0.00005	11.1
Camphene	0.00001	0.00005	0.0176	β -myrcene	0.00001	0.00005	2.39
Camphor	0.00001	0.00005	0.00091	Nerol	0.00001	0.00005	ND
3-Carene	0.00001	0.00005	0.0165	cis-Nerolidol	0.00001	0.00005	ND
β -Caryophyllene	0.00001	0.00005	39.2	trans-Nerolidol	0.00001	0.00005	ND
Caryophyllene Oxide	0.00001	0.00005	0.0353	Ocimene	0.00001	0.00005	ND
α -Cedrene	0.00001	0.00005	ND	α -Phellandrene	0.00001	0.00005	0.0407
Cedrol	0.00001	0.00005	ND	α -Pinene	0.00001	0.00005	3.03
Eucalyptol	0.00001	0.00005	ND	β -Pinene	0.00001	0.00005	2.31
Fenchone	0.00001	0.00005	ND	Pulegone	0.00001	0.00005	ND
Fenchyl Alcohol	0.00001	0.00005	ND	Sabinene	0.00001	0.00005	0.0368
Geraniol	0.00001	0.00005	ND	Sabinene Hydrate	0.00001	0.00005	ND
Geranyl Acetate	0.00001	0.00005	ND	α -Terpinene	0.00001	0.00005	ND
Guaiol	0.00001	0.00005	ND	γ -Terpinene	0.00001	0.00005	0.00169
Hexadhydrothymol	0.00001	0.00005	ND	α -Terpineol	0.00001	0.00005	2.93
α -Humulene	0.00001	0.00005	3.00	γ -Terpineol	0.00001	0.00005	ND
Isoborneol	0.00001	0.00005	ND	Terpinolene	0.00001	0.00005	0.00082
Isopulegol	0.00001	0.00005	ND	Valencine	0.00001	0.00005	ND

ND = Not Detected; NT = Not Tested; LOD = Limit of Detection; LOQ = Limit of Quantitation; P = Pass; F = Fail; RL = Reporting Limit



Pepper



Hops



Clove



Citrus



Floral



06/25/2021



Banana Runtz D8 Vape

Sample ID: SA-06172021-2315
 Batch: 0621D8VP
 Type: Finished Materials
 Matrix: Concentrate - Vape

Received: 06/21/2021
 Completed: 06/25/2021

Client
 SunFlora Inc.
 600 8th Ave W, STE 400
 Palmetto, FL 34221
 USA

Reporting Limit Appendix

Heavy Metals -

Analyte	Limit (ppb)	Analyte	Limit (ppb)
Arsenic	200	Lead	500
Cadmium	200	Mercury	100

Microbials -

Analyte	Limit (CFU/g)	Analyte	Limit (CFU/g)
Coliforms	1	Aerobic Bacteria	100000
Bile-Tolerant Gram-Negative Bacteria	1000	E.coli/Coliforms	1
Yeast & Mold	1000	Salmonella	1

Residual Solvents -

Analyte	Limit (ppm)	Analyte	Limit (ppm)
Acetone	5000	Ethylene Oxide	1
Acetonitrile	410	Heptane	5000
Benzene	2	n-Hexane	290
Butane	5000	Isobutane	5000
1-Butanol	5000	Isopropyl Acetate	5000
2-Butanol	5000	Isopropyl Alcohol	500
2-Butanone	5000	Isopropylbenzene	70
Chloroform	60	Methanol	3000
Cyclohexane	3880	2-Methylbutane	5000
1,2-Dichloroethane	5	Methylene Chloride	600
1,2-Dimethoxyethane	100	2-Methylpentane	290
Dimethyl Sulfoxide	5000	3-Methylpentane	290
N,N-Dimethylacetamide	1090	n-Pentane	5000
2,2-Dimethylbutane	290	1-Pentanol	5000
N,N-Dimethylformamide	880	n-Propane	5000
2,2-Dimethylpropane		1-Propanol	5000
1,4-Dioxane	380	Pyridine	200
Ethanol	5000	Tetrahydrofuran	720
2-Ethoxyethanol	160	Toluene	890
Ethyl Acetate	5000	Trichloroethylene	80
Ethyl Ether	5000	Tetramethylene Sulfone	160
Ethylbenzene	70	Xylenes (o-, m-, and p-)	2170
Ethylene Glycol	620		

Pesticides -

Analyte	Limit (ppb)	Analyte	Limit (ppb)
Acequinocyl	30	Imidacloprid	400
Acetamiprid	50	Kresoxim methyl	100
Aldicarb	100	Malathion	500
Azoxystrobin	100	Metalaxyl	2000
Bifenazate	100	Methiocarb	100
Bifenthrin	500	Methomyl	100
Boscalid	100	Mevinphos	100
Captan	700	MGK-264	200
Carbaryl	25	Myclobutanil	100
Carbofuran	100	Naled	100
Chloranthraniliprole	200	Oxamyl	200
Chlordane	50	Paclobutrazol	100
Chlorfenapyr	100	Parathion methyl	100
Chlorpyrifos	100	Pentachloronitrobenzene	100
Clofentezine	100	Permethrin	500
Coumaphos	100	Phosmet	50
Cyfluthrin	100	Piperonyl Butoxide	3000
Cypermethrin	1000	Prallethrin	100
Daminozide	100	Propiconazole	100
Diazinon	100	Propoxur	100
Dichlorvos	100	Pyrethrins	500
Dimethoate	100	Pyridaben	100
Dimethomorph	2000	Spinetoram	100
Ethoprophos	100	Spinosad	100
Etofenprox	100	Spiromesifen	100
Etoxazole	10	Spirotetramat	100
Fenhexamid	100	Spiroxamine	100
Fenoxycarb	100	Tebuconazole	100
Fenpyroximate	100	Thiacloprid	100
Fipronil	100	Thiamethoxam	5000
Fonicamid	100	Trifloxystrobin	100
Fludioxonil	100		

Mycotoxins -

Analyte	Limit (ppm)	Analyte	Limit (ppm)
B1	20	B2	20
G1	20	G2	20
Ochratoxin A	20		

Pesticides -

Analyte	Limit (ppb)	Analyte	Limit (ppb)
Abamectin	100	Hexythiazox	100
Acephate	20	Imazalil	100

