

# CERTIFICATE OF ANALYSIS

## ISO/IEC 17025:2017 ACCREDITATION #103104



Order #: 89067  
 Order Name: 112021HRDC  
 Batch#: 112021HRDC  
 Received: 12/16/2021  
 Completed: 12/23/2021

SunFlora Inc.



### Sample



<p><b>N/D</b> Total D9-THC</p>	<p><b>0.258%</b> Total CBD</p>
<p><b>12.7 mg</b> Cannabinoids per unit</p>	<p><b>12.7 mg</b> CBD per unit</p>

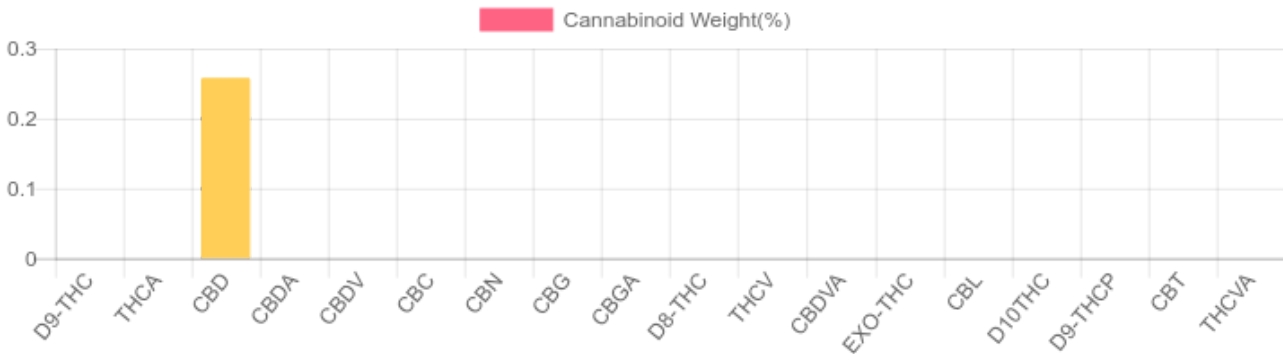
1 unit = 4.91 grams per unit x Cannabinoid concentration

### Cannabinoids Test

HPLC-DAD  
 GSL SOP 400

UPLOADED: 12/21/2021 10:10:38

Cannabinoids	LOQ(mg/g)	LOD(mg/g)	weight(%)	mg/g	mg/unit
D9-THC	0.1954	0.0645	N/D	N/D	N/D
THCA	0.1954	0.0645	N/D	N/D	N/D
CBD	0.1954	0.0645	<b>0.258%</b>	<b>2.578</b>	<b>12.658</b>
CBDA	0.1954	0.0645	N/D	N/D	N/D
CBDV	0.1954	0.0645	N/D	N/D	N/D
CBC	0.1954	0.0645	N/D	N/D	N/D
CBN	0.1954	0.0645	N/D	N/D	N/D
CBG	0.1954	0.0645	N/D	N/D	N/D
CBGA	0.1954	0.0645	N/D	N/D	N/D
D8-THC	0.1954	0.0645	N/D	N/D	N/D
THCV	0.1954	0.0645	N/D	N/D	N/D
CBDVA	0.1954	0.0645	N/D	N/D	N/D
EXO-THC	0.1954	0.0645	N/D	N/D	N/D
CBL	0.1954	0.0645	N/D	N/D	N/D
D10THC	0.1954	0.0645	N/D	N/D	N/D
D9-THCP	0.1954	0.0645	N/D	N/D	N/D
CBT	0.1954	0.0645	N/D	N/D	N/D
THCVA	0.1954	0.0645	N/D	N/D	N/D
TOTAL D9-THC			N/D	N/D	N/D
TOTAL CBD*			<b>0.258%</b>	<b>2.578</b>	<b>12.7</b>
TOTAL CANNABINOIDS			<b>0.258%</b>	<b>2.578</b>	<b>12.7</b>



\*Total CBD = CBD + CBDA x 0.877  
 N/D - Not Detected, B/LOQ - Below Limit of Quantification

Ben Witten, MS, MT.,  
 Lab Director

**Green Scientific Labs**  
 info@greenscientificlabs.com  
 1-833 TEST-CBD



# CERTIFICATE OF ANALYSIS

## ISO/IEC 17025:2017 ACCREDITATION #103104



Order #: 89067  
 Order Name: 112021HRDC  
 Batch#: 112021HRDC  
 Received: 12/16/2021  
 Completed: 12/23/2021

SunFlora Inc.



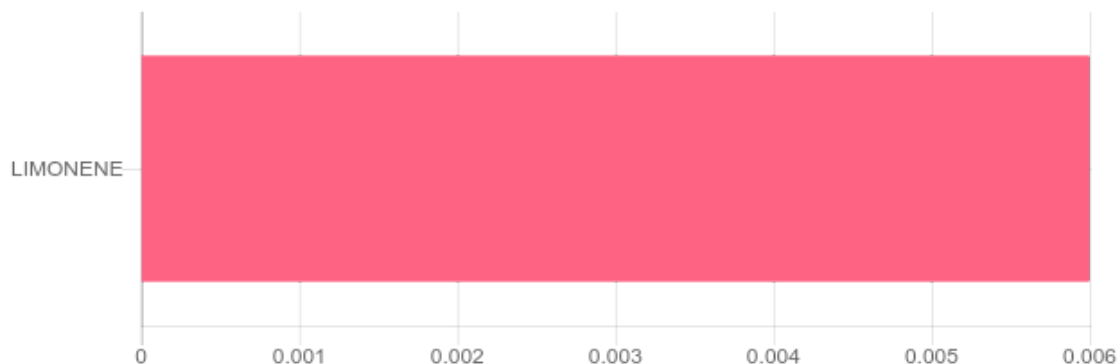
### TERPENES: TOTAL (0.006%)

GSL SOP 404  
 Uploaded: 12/22/2021 12:14:18

GC-FID

Terpene	Results (%)	LOQ (%)	LOD (%)	Terpene	Results (%)	LOQ (%)	LOD (%)
3-CARENE	N/D	0.003%	0.001%	GERANIOL	N/D	0.003%	0.001%
A-BISABOLOL	N/D	0.003%	0.001%	GERANYL ACETATE	N/D	0.003%	0.001%
A-CEDRENE	N/D	0.003%	0.001%	GUAJOL	N/D	0.003%	0.001%
A-HUMULENE	N/D	0.003%	0.001%	HEXAHYDROTHYMOL	N/D	0.003%	0.001%
A-PINENE	N/D	0.003%	0.001%	ISOBORNEOL	N/D	0.003%	0.001%
A-TERPINENE	N/D	0.003%	0.001%	ISOPULEGOL	N/D	0.003%	0.001%
B-MYRCENE	N/D	0.003%	0.001%	LIMONENE	0.006%	0.003%	0.001%
B-PINENE	N/D	0.003%	0.001%	LINALOOL	N/D	0.003%	0.001%
BORNEOL (MIX OF ISOMERS)	N/D	0.003%	0.001%	NEROL	N/D	0.003%	0.001%
CAMPHENE	N/D	0.003%	0.001%	P-MENTHA-1, 5-DIENE	N/D	0.003%	0.001%
CAMPHOR (MIX OF ISOMERS)	N/D	0.003%	0.001%	PULEGONE (+)	N/D	0.003%	0.001%
CARYOPHYLLENE OXIDE	N/D	0.003%	0.001%	SABINENE HYDRATE	N/D	0.003%	0.001%
CEDROL	N/D	0.003%	0.001%	TERPINEOL (MIX OF ISOMERS)	N/D	0.003%	0.001%
CIS-NEROLIDOL	N/D	0.003%	0.001%	TERPINOLENE	N/D	0.003%	0.001%
CIS-OCIMENE	N/D	0.003%	0.001%	TRANS-CARYOPHYLLENE	N/D	0.003%	0.001%
ENDO-FENCHYL ALCOHOL	N/D	0.003%	0.001%	TRANS-NEROLIDOL	N/D	0.003%	0.001%
EUCALYPTOL	N/D	0.003%	0.001%	TRANS-OCIMENE	N/D	0.003%	0.001%
FENCHONE (MIX OF ISOMERS)	N/D	0.003%	0.001%	VALENCENE	N/D	0.003%	0.001%
GAMMA-TERPINENE	N/D	0.003%	0.001%				

### Top Terpenes Results:



Ben Witten, MS, MT.,  
 Lab Director

**Green Scientific Labs**  
 info@greenscientificlabs.com  
 1-833 TEST CBD



This COA is governed by the terms and conditions listed on: <https://www.greenscientificlabs.com/terms-of-use.php>

# CERTIFICATE OF ANALYSIS

## ISO/IEC 17025:2017 ACCREDITATION #103104



Order #: 89067  
 Order Name: 112021HRDC  
 Batch#: 112021HRDC  
 Received: 12/16/2021  
 Completed: 12/23/2021

SunFlora Inc.



### PESTICIDE ANALYSIS:

GSL SOP 401

PREPARED: 12/20/2021 17:24:49

UPLOADED: 12/21/2021 10:55:55

GC-MS/MS

Pesticide	Action Level (ppm)	Results (ppm)	LOQ (ppm)	LOD (ppm)
CAPTAN	3.000	N/D	0.100	0.010
CHLORDANE	0.100	N/D	0.100	0.010
CHLORFENAPYR	0.100	N/D	0.100	0.010
COUMAPHOS	0.100	N/D	0.100	0.010

Pesticide	Action Level (ppm)	Results (ppm)	LOQ (ppm)	LOD (ppm)
CYFLUTHRIN	1.000	N/D	0.100	0.010
CYPERMETHRIN	1.000	N/D	0.100	0.010
PENTACHLORONITROBENZENE	0.200	N/D	0.100	0.010

LC-MS/MS

Pesticide	Action Level (ppm)	Results (ppm)	LOQ (ppm)	LOD (ppm)
ABAMECTIN B1A	0.300	N/D	0.005	0.005
ACEPHATE	3.000	N/D	0.005	0.001
ACEQUINOCYL	2.000	N/D	0.005	0.005
ACETAMIPRID	3.000	N/D	0.005	0.005
ALDICARB	0.100	N/D	0.005	0.005
AZOXYSTROBIN	3.000	N/D	0.005	0.001
BIFENAZATE	3.000	N/D	0.005	0.001
BIFENTHRIN	0.500	N/D	0.005	0.005
BOSCALID	3.000	N/D	0.005	0.005
CARBARYL	0.500	N/D	0.005	0.001
CARBOFURAN	0.100	N/D	0.005	0.001
CHLORANTRANILIPROLE	3.000	N/D	0.005	0.005
CHLORMEQUAT CHLORIDE	3.000	N/D	0.250	0.100
CHLORPYRIFOS	0.100	N/D	0.005	0.005
CLOFENTEZINE	0.500	N/D	0.005	0.005
DAMINOZIDE	0.100	N/D	0.005	0.001
DIAZINON	0.200	N/D	0.005	0.005
DICHLORVOS	0.100	N/D	0.005	0.001
DIMETHOATE	0.100	N/D	0.005	0.001
DIMETHOMORPH	3.000	N/D	0.005	0.001
ETHOPROPHOS	0.100	N/D	0.005	0.001
ETOFENPROX	0.100	N/D	0.005	0.005
ETOXAZOLE	1.500	N/D	0.050	0.005
FENHEXAMID	3.000	N/D	0.005	0.001
FENOXYCARB	0.100	N/D	0.005	0.005
FENPYROXIMATE	2.000	N/D	0.005	0.005
FIPRONIL	0.100	N/D	0.005	0.005
FLONICAMID	2.000	N/D	0.025	0.005
FLUDIOXONIL	3.000	N/D	0.005	0.005
HEXYTHIAZOX	2.000	N/D	0.005	0.005

Pesticide	Action Level (ppm)	Results (ppm)	LOQ (ppm)	LOD (ppm)
IMAZALIL	0.100	N/D	0.005	0.001
IMIDACLOPRID	3.000	N/D	0.005	0.001
KRESOXIM-METHYL	1.000	N/D	0.005	0.005
MALATHION	2.000	N/D	0.005	0.001
METALAXYL	3.000	N/D	0.005	0.001
METHIOCARB	0.100	N/D	0.005	0.001
METHOMYL	0.100	N/D	0.005	0.001
MEVINPHOS	0.100	N/D	0.005	0.001
MYCLOBUTANIL	3.000	N/D	0.005	0.005
NALED	0.500	N/D	0.005	0.001
OXAMYL	0.500	N/D	0.005	0.001
PACLOBUTRAZOL	0.100	N/D	0.005	0.005
PERMETHRINS	1.000	N/D	0.005	0.005
PHOSMET	0.200	N/D	0.005	0.001
PIPERONYL BUTOXIDE	3.000	N/D	0.005	0.005
PRALLETHRIN	0.400	N/D	0.005	0.005
PROPICONAZOLE	1.000	N/D	0.010	0.005
PROPOXUR	0.100	N/D	0.005	0.001
PYRETHRINS	1.000	N/D	0.005	0.005
PYRIDABEN	3.000	N/D	0.005	0.005
SPINETORAM	3.000	N/D	0.005	0.005
SPINOSAD	3.000	N/D	0.005	0.005
SPIROMESIFEN	3.000	N/D	0.005	0.001
SPIROTETRAMAT	3.000	N/D	0.005	0.005
SPIROXAMINE	0.100	N/D	0.005	0.001
TEBUCONAZOLE	1.000	N/D	0.005	0.001
THIACLOPRID	0.100	N/D	0.005	0.001
THIAMETHOXAM	1.000	N/D	0.005	0.001
TRIFLOXYSTROBIN	3.000	N/D	0.005	0.005

N/D = Not Detected, A/LOQ = Above LOQ Level, B/LOQ = Below LOQ Level, B/LOD = Below LOD Level

Ben Witten, MS, MT.,  
 Lab Director

**Green Scientific Labs**  
 info@greenscientificlabs.com  
 1-833 TEST CBD



This COA is governed by the terms and conditions listed on: <https://www.greenscientificlabs.com/terms-of-use.php>

# CERTIFICATE OF ANALYSIS

## ISO/IEC 17025:2017 ACCREDITATION #103104



Order #: 89067  
Order Name: 112021HRDC  
Batch#: 112021HRDC  
Received: 12/16/2021  
Completed: 12/23/2021

SunFlora Inc.



### RESIDUAL SOLVENTS:

HS-GC-MS

GSL SOP 405

Uploaded: 12/21/2021 12:42:16

Residual Solvent	Action Level (ppm)	Results (ppm)	LOQ (ppm)	LOD (ppm)
1,1-DICHLOROETHENE	8	N/D	0.63	0.6
1,2-DICHLOROETHANE	2	N/D	0.12	0.012
1,2-DICHLOROETHENE	5	N/D	0.73	0.09
ACETONE	5,000	N/D	140	9
ACETONITRILE	410	N/D	25	0.72
BENZENE	1	N/D	1	0.6
BUTANE	5,000	N/D	50	48
CHLOROFORM	1	N/D	1	0.5
ETHANOL	5,000	1,770	140	12
ETHYL ACETATE	5,000	N/D	140	2.4
ETHYL ETHER	5,000	N/D	140	6
ETHYLENE OXIDE	1	N/D	2	0.6
ISOPROPYL ALCOHOL	5,000	N/D	140	3
METHANOL	3,000	N/D	100	6
METHYLENE CHLORIDE	125	N/D	1.5	1.5
N-HEPTANE	5,000	N/D	140	6
N-HEXANE	290	N/D	18	0.06
PENTANE	5,000	N/D	140	9
PROPANE	5,000	N/D	30	30
TOLUENE	890	N/D	53	0.9
TRICHLOROETHENE	1	N/D	1	0.3
XYLENES	150	N/D	130	1.8

Ben Witten, MS, MT.,  
Lab Director

Green Scientific Labs  
info@greenscientificlabs.com  
1-833-TEST-CBD



This COA is governed by the terms and conditions listed on: <https://www.greenscientificlabs.com/terms-of-use.php>

# CERTIFICATE OF ANALYSIS

## ISO/IEC 17025:2017 ACCREDITATION #103104



Order #: 89067  
Order Name: 112021HRDC  
Batch#: 112021HRDC  
Received: 12/16/2021  
Completed: 12/23/2021

SunFlora Inc.



### Microbial Analysis:

Microbial Analysis GSL SOP 406

Uploaded: 12/19/2021 15:47:05

### MICROBIAL ANALYSIS:

Test	SOP	Test Method	Device Used	Allowable Criteria	Actual Result
TOTAL YEAST AND MOLD	406	REAL-TIME PCR	ARIAMX PCR	NOT APPLICABLE	< 1,000 CFU/G
LISTERIA MONOCYTOGENES	406	REAL-TIME PCR	ARIAMX PCR	NOT APPLICABLE	NOT DETECTED
STEC E. COLI*	406	REAL-TIME PCR	ARIAMX PCR	< 1 CFU/G	NOT DETECTED
PATHOGENIC E. COLI	406	REAL-TIME PCR	ARIAMX PCR	NOT APPLICABLE	NOT DETECTED
SALMONELLA*	406	REAL-TIME PCR	ARIAMX PCR	< 1 CFU/G	NOT DETECTED

\* STEC and Salmonella run as Multiplex

\*\* CFU/g Calculation based on MIP/Extract matrix

Ben Witten, MS, MT.,  
Lab Director

Green Scientific Labs  
info@greenscientificlabs.com  
1-833 TEST CBD



This COA is governed by the terms and conditions listed on: <https://www.greenscientificlabs.com/terms-of-use.php>

# CERTIFICATE OF ANALYSIS

## ISO/IEC 17025:2017 ACCREDITATION #103104



Order #: 89067  
Order Name: 112021HRDC  
Batch#: 112021HRDC  
Received: 12/16/2021  
Completed: 12/23/2021

SunFlora Inc.



### Mycotoxin Analysis:

LC-MS/MS  
GSL SOP 401

Uploaded: 12/21/2021 10:55:41

Analyte	LOQ (ppb)	LOD (ppb)	Action Lvl (ppb)	Results (ppb)
AFLATOXIN B1	1	1	20	N/D
AFLATOXIN B2	1	1	20	N/D
AFLATOXIN G1	1	1	20	N/D
AFLATOXIN G2	1	1	20	N/D
OCHRATOXIN A	1	1	20	N/D

### Heavy Metals Analysis:

ICP-MS  
GSL SOP 403

Uploaded: 12/21/2021 16:51:44

Metal	LOQ (ppb)	LOD (ppb)	Action Level (ppb)	Result (ppb)
ARSENIC (AS)	75	20	200	N/D
CADMIUM (CD)	75	20	200	N/D
MERCURY (HG)	75	20	100	N/D
LEAD (PB)	75	20	500	N/D

### Moisture Analysis:

Shimadzu MOC63U Moisture Balance - GSL SOP 411

Uploaded: 12/20/2021 20:07:20

#### Moisture %

3.8%

### Water Activity:

Water Activity Meter

Uploaded: 12/20/2021 20:07:21

#### Water

0.36

### Filth and Foreign Materials Analysis:

Microscope - Amscope Simul-Focal Trinocular Stereo Zoom Microscope - GSL SOP 409

Uploaded: 12/17/2021 19:30:05

Pass: No Foreign Materials Detected

Ben Witten, MS, MT.,  
Lab Director

Green Scientific Labs  
info@greenscientificlabs.com  
1-833 TEST CBD

